

# Discover with Stereo-seq OMNI V1.1

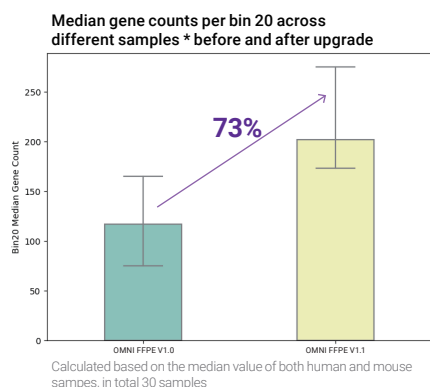
## Unlocking Deeper Insights with Enhanced Performance

Stereo-seq OMNI V1.1 is a revolutionary sequencing-based spatial multi-omics solution specifically designed for Formalin-fixed and Paraffin-embedded (FFPE) samples. It enables true single-cell level gene expression profiling combined with histology study, providing unparalleled insights for groundbreaking discoveries in biology and clinical translational research.

## Technology highlights

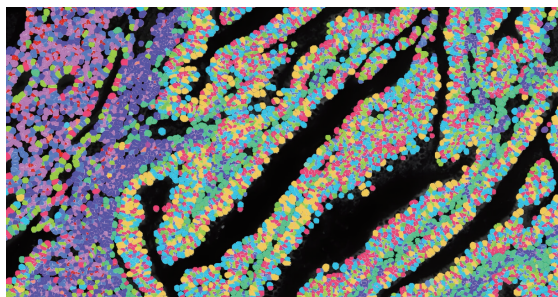
### •Deeper Insights Per Run:

Achieve 1X–3X higher capture efficiency for richer RNA profiling and deeper biological insights from every run.



### •True Single-Cell Profiling at Scale:

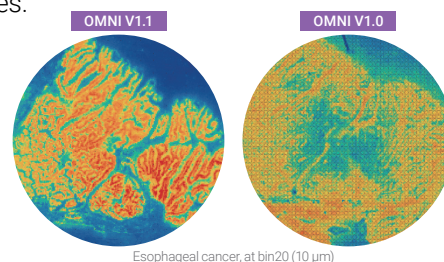
Achieve precise spatial single-cell analysis for well-defined tissue annotation and stratification.



Mouse intestine FFPE sample single cell spatial clustering results

### •Improved Data Usability:

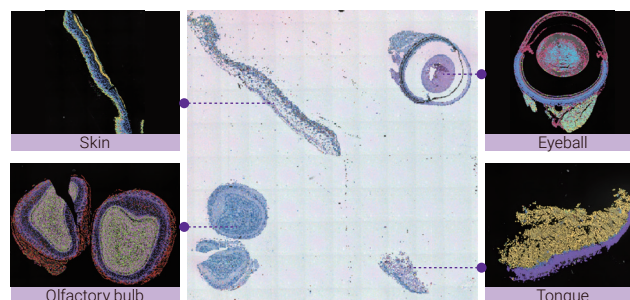
Enhanced data usability of over 100% (approximately 2X) to efficiently transform data into information within clinical samples.



	OMNI FFPE V1.1	OMNI FFPE V1.0
Total reads/M	877	866
Bin20 Median Gene	420	155
Valid CID/%	81.9	51.6

### •Preserved Spatial Fidelity:

Enhanced tissue diffusion control retains true single-cell resolution while allowing for sample multiplexing.



Multiple mouse FFPE samples mounted on the same Stereo-seq Chip N (1cm \* 1cm)

## Empowers breakthroughs across various research domains

01

### Disease Research

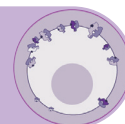
Preserve true biology to uncover mechanisms of progression and therapy response.



02

### Biomarker Discovery

Generate richer, more reliable datasets for predictive biomarkers.



03

### Cohort-scale Spatial Analysis

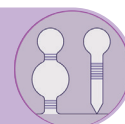
Consistent spatial profiling across large cohorts to support comparative and cross-sample studies.



04

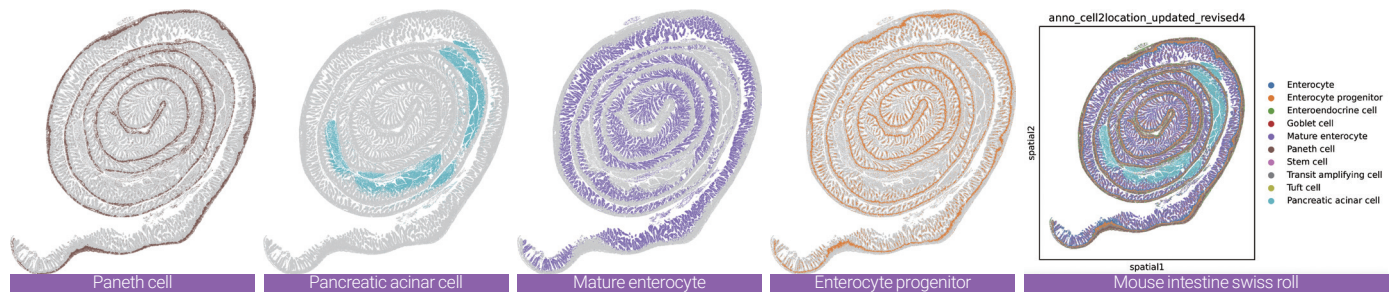
### LncRNA Modulation

Unlock holistic RNA atlases to explore regulatory networks beyond coding genes.

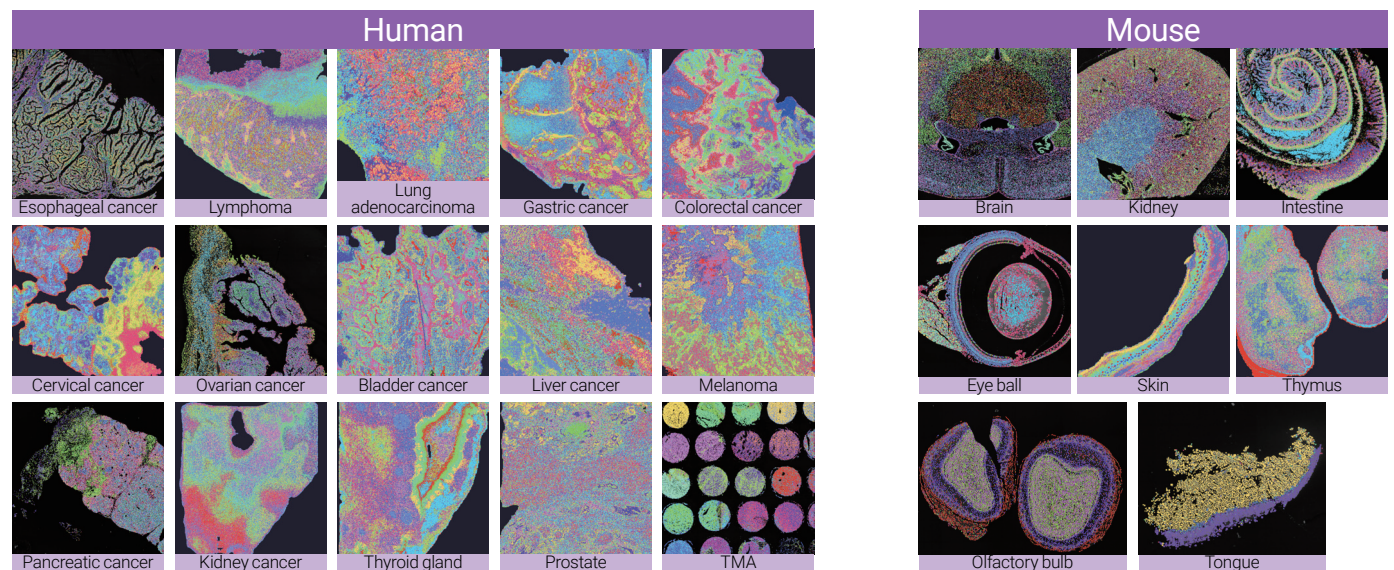


# True single-cell profiling at scale with high spatial fidelity

Precise spatial single-cell analysis enables well-defined tissue annotation and stratification.



## Broad sample compatibility to broaden translational impact



## STOmics Products

Catalog Number	Catalog Number (US use only)	Set Name	Specifications	Version	Description
211SN11004	211SN11004-CG	Stereo-seq OMNI Transcriptomics FFPE Set for Chip-on-a-slide (0.5cm*0.5cm) V1.1	4 RXN	V1.1	For generating a spatially-resolved RNA library, available for Formalin-fixed and Paraffin-embedded (FFPE) biological tissue sections.
211SN11114	211SN11114-CG	Stereo-seq OMNI Transcriptomics FFPE Set for Chip-on-a-slide (1cm*1cm) V1.1	4 RXN	V1.1	
111KL11160	111KL11160-CG	Stereo-seq 16 Barcode Library Preparation Kit	16 RXN	V1.1	Designed for library preparation of samples using Stereo-seq technology, enables the addition of sample barcodes and library construction.
301AUX001	301AUX001-CG	Stereo-seq PCR Adaptor	2 EA	/	Compatible with PCR thermal cycler as a heating unit.

Manufactured by

**STOmics**

Reach out to us to learn more:

Website: <https://en.stomics.tech/>



\* FOR RESEARCH USE ONLY. NOT FOR USE IN DIAGNOSTIC PROCEDURES.  
© 2025 STOmics Tech Co., Ltd. All rights reserved.

ST\_260109\_Rev C\_Product\_OMNI V1.1\_STOmics